



Nebraska Panhandle
AHEC

CONTACT US

p. (308) 635-6711

2620 College Park
Scottsbluff, NE 69361

www.np-ahec.org

www.facebook.com/NebraskaPanhandleAhec



OUR MISSION

Support healthcare, academic, and community members in our region to become champions in recruiting, creating, and maintaining a diverse healthcare workforce through collaborative partnerships.

HOW TO REQUEST ITEMS?

Please fill out the check-out form on the back of this booklet for the resources you wish to borrow and email to:
Tammy.Fehringer@NP-AHEC.Org.



OBESITY SIMULATOR

Teaches students the unique physical and emotional complexities of caring for bariatric patients. Legs are included.

ONPACE

Teaches correct swabbing technique. Confirmation of correct swab insertion and contact with the anatomical target at the back of the nasopharynx is indicated by the light in the forehead.



GERIATRIC SIMULATOR

Help students develop empathy towards older people/ patients and individuals with limited mobility. This wearable simulator enables students to personally experience a variety of physical and visual challenges, like stooped posture, restricted range of motion, glaucoma and more. It includes a sensitivity suit, walker, storage case and curriculum.

CHESTER CHEST

Chester Chest is a great tool for teaching competency testing, skills assessment, fluid infusion, blood withdrawal and dressing securement techniques associated with central access devices.



GAIT BELT

Assistive devices which can be used to help safely transfer a person from a bed to a wheelchair, assist with sitting and standing, and help with walking around. It is secured around the waist to allow a caregiver to grasp the belt to assist in lifting or moving a person. There are 1 small, 1 medium, and 1 large for loan.

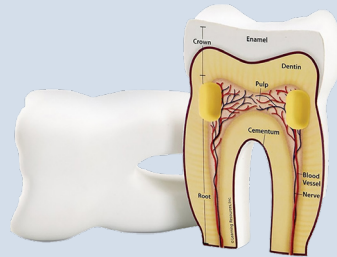


TEETH MODEL & TOOTHBRUSH

The essentials of correct brushing and flossing techniques can be demonstrated with this giant set of teeth. Flexible hinges connect the upper and lower jaw and make teaching good oral hygiene easy. Comes with oversized toothbrush. There are 2 for loan.

CROSS SECTION FOAM TOOTH MODEL

Labeled on one side with main parts of the tooth: enamel, dentin, pulp, cementum, nerves, blood vessels, root and crown. The other half is labeled with letter for assessment. Includes Activity Guide, features facts about teeth, dental hygiene, and related activities.

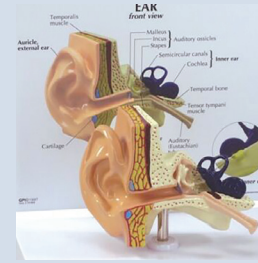
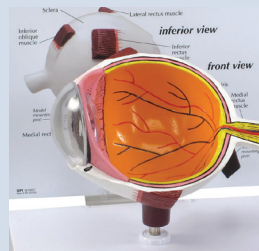


OUR TEETH PUZZLE

Four-layer puzzle which reveals the tooth's placement in the gum, the jawbone and the dentin of the tooth, and the nerve within the dentin. There are 13 interchangeable pieces. This puzzle is made of wood and is silk-screened with nontoxic, durable paints.

EYE MODEL

Oversized model with cut-away to show inner anatomy. Lens and cornea removable.



EAR MODEL

Full size model shows canal and inner ear mechanisms.

ILLUMINATING EAR SCOPE

FDA approved with full color guidebook.

Features:

- Optical grade lens
- 3, 4, and 5mm tips
- Chrome handle
- Standard 222 bulb



AUDIOMETER

In addition to measuring tones, an audiometer can determine how well the cochlea functions. There are 2 for loan.

SUPPORTING STUDENTS

Since 2005, the Nebraska Panhandle AHEC has worked with thousands of students in grades kindergarten through college.





DRUNKEN & MARIJUANA GOGGLES

Wearers of these glasses experience the visual distortion, loss of perception, and lack of control that make drunk drivers so dangerous. Role-playing games use the goggles to make drunk driving consequences more realistic.

1-BAC .26-.35, 1-BAC .06-.08, 1-BAC .08-.15, 1-Marijuana for loan



MED SLED

Med sleds are used to evacuate a non-ambulatory individual from a single-story building or down the stairwell of a multi-story building using a roll and drag method. There are 2 adult and 1 neonatal sleds for loan.

LOU-WHEEZE

Lou-Wheeze has two flexible latex lungs. One representing a healthy lung, and the other depicts the damage done by emphysema and cancer. Comes with bellows pump and instructions.



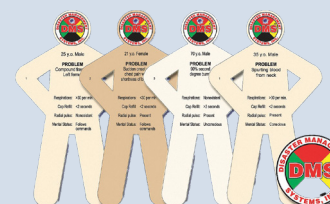
TOURNIQUET

Prevents the flow of blood to the leg or the arm for a period of time. A tourniquet may be used when drawing blood or to stop bleeding after an injury. There are 30 for loan.



SMOKER'S FOUL MOUTH

This hand painted model graphically displays what cigarette smoking can do to the mouth. This model details a variety of harmful effects, including gum disease, tooth decay, and lip cancer. It includes two removable tongues. One tongue depicts hairy tongue (lingua villosa), and the other portrays leukoplakia and tongue cancer. Mouth is mounted on a hand painted model of the lit end of a cigarette.



VICTIM TRIAGE CARDS

Oversized cards provide a simple, but effective means to train triage. There are 2 sets for loan.

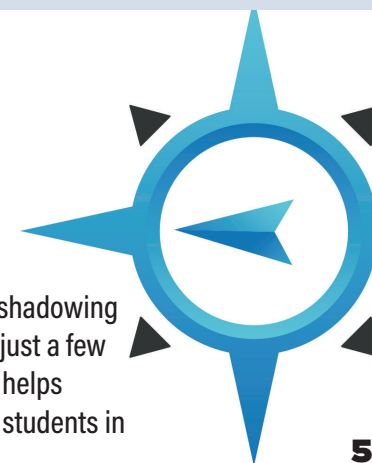
TOBACCO JAR

Tar is a residue found in the smoke produced by burning tobacco. One-pack-a-day smokers put approximately 500cc of the dark carcinogenic liquid into their lungs in one year's time.



FINDING THE NEXT GENERATION OF HEALTHCARE PROVIDERS

Classroom presentations, career, fairs, job shadowing programs, and health career materials are just a few of the ways the Nebraska Panhandle AHEC helps communities recruit and retain healthcare students in Nebraska.





BLOOD PRESSURE MACHINE

A sphygmomanometer, a.k.a. a blood pressure monitor, or blood pressure gauge, is a device used to measure blood pressure, composed of an inflatable cuff to collapse and then release the artery under the cuff in a controlled manner, and a mercury or aneroid manometer to measure the pressure. There are 12 Manual and 4 Automatic machines for loan.



EZ-IO

The EZ-IO system is used anytime vascular access is difficult to obtain in emergent, urgent, or medically necessary cases for up to 24 hours and provides peripheral venous access with central venous catheter performance. There are 5 for loan.

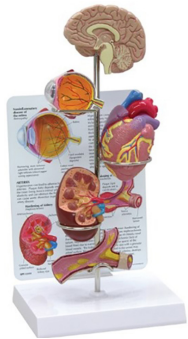
PULSE OXIMETER

Electronic devices that measures the saturation of oxygen carried in your red blood cells. There are 3 for loan.



IV ARM

Our adult intravenous training arms (1 white & 1 brown) are designed for essential training in the procedures of blood collection, infusion, and intravenous injections. Set-up kit includes simulated blood concentrate, pressure bulb, blood dispensing bag, spare arm skin, funnel, talcum powder, and instruction manual. There are 2 for loan.



HYPERTENSION MODEL

Miniature Brain, Eye, Heart, Kidney and Artery models. The education card illustrates effects associated with hypertension: glaucoma, atherosclerosis, arterial plaque, kidney failure and stroke. Model display stands 15" tall and comes with white base and educational card.



REFLEX HAMMER

Chrome plated handle with triangular rubber head in a zip lock triangular pouch.

LEARNING CD'S

Learning Arrhythmia
Learning Cardia Auscultation
Learning Coronary Artery
Learning Electrocardiology
Learning Lung Sounds



LET'S PARTNER

The Nebraska Panhandle AHEC is your health education partner. We are here to support health topics in the classroom. Contact us to see what we offer.





HIDDEN SUGAR TEST TUBES

Shows the amount of "hidden" sugar in common foods.



5 LB MASS & MUSCLE

These models are a great way to show the differences between muscle and fat. There are 2 models of muscle and fat for loan.

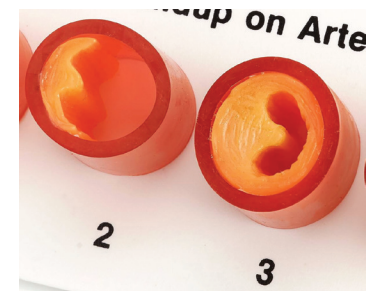
SALT TUBES

Shows the amount of sodium in common foods.



CLOGGED ARTERIES

Shows different amounts of plaque build-up on artery walls.



VENDING MACHINE TUBES

Shows the amount of fat found in snacks common in vending machines. These unique tubes contain simulated fat that oozes from one end of the test tube to the other. Labels on the tubes enable viewers to compare the fat, calorie, and cholesterol content of the different foods.



DOUBLE DECKER...OR DOUBLE BYPASS

These miniature cheeseburger models make a clear statement about the link between high-fat foods and heart disease. The bottom of each hand painted cheeseburger is crafted to resemble the inside of a dangerously clogged artery. Plastic Jar contains 12 models.

OCCLUDED ARTERY MODEL

This larger than life see-thru model of an artery shows a constricted passage clogged with plaque. Turning the model illustrates the difficulty that "red blood cells" have flowing thru an artery with atherosclerosis.



FIZZICS OF SODA

The giant soda can shows the approximate amount of soda a person who gulps down two 12-oz cans a day would drink in 1 month. Inside the can are a bag of sugar that reveals the amount of sugar consumed and a bottle of simulated fat that represents the amount of weight a person could gain.





BASIC BUDDY & BABY BUDDY

Manikins teach individuals or large groups the life-saving techniques of CPR. The one-piece, disposable lung/mouth protection system makes this manikin completely sanitary - there is no risk of cross contamination and no need to sanitize the manikin after use. The airway opens using the head tilt/chin lift method, and there is a visible chest rise when ventilated. The xiphoid process provides an anatomical reference point for hand placement and compressions. There are 2 adult/kid and 2 infant for loan.

ANTI CHOKING TRAINER & AED CHOKING TRAINER

Enables students to develop confidence in their ability to perform the Abdominal Thrust (Heimlich) Maneuver.

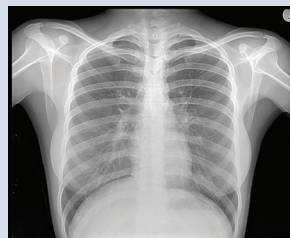


STETHOSCOPE

The stethoscope is a medical device for auscultation, or listening to internal sounds of an animal or human body. There are 10 for loan.

HUMAN X-RAYS

This complete set of x-rays has been reproduced from living persons taken for medical reasons and, in addition to bones, includes soft tissues and actual organs. The x-rays can be studied individually or arranged together to create a human skeleton about the size of a middle school student. Contains light box, x-ray vest, and additional x-rays.



GLO-GERM BAG & KIT

Glo Germ is a product that demonstrates how germs are spread. It consists of an odorless lotion or powder which glows brightly when exposed to ultra-violet light. This Classroom Kit contains a battery-operated ultraviolet light, an 8 ounce bottle of lotion, and a 4 ounce bottle of powder. The Glo Germ Bag is loaded with powder "germs" and is meant to show how easily germs spread.

PLUSH GIANT MICROBES

Soft, cuddly replicas of not so cuddly real germs. Each one is a cute but accurate representation of a germ, only it's a million times the germ's actual size.



FLUORESCENT LATENT FINGERPRINT KIT

This fluorescent latent print kit holds a UV light, fluorescent powder, applicator, fingerprint cards and tape.



BI-CHROMATIC FINGERPRINT KIT

With this professional fingerprint kit, you can dust for prints on many different surfaces. The powder appears black when dusted on a light color surface, but silver when dusted on a dark-colored surface. Lifted prints are always black.



Resource Check Out Form

Please write or type the description of the resources you want to borrow.

List Resources Requested	

Resources are loaned for a two (2) week period, unless prior arrangements have been made.

Items must be picked up and returned to the NP-AHEC office at 2620 College Park, Room #B130 Scottsbluff, NE 69361.



This program is supported in part through HRSA under grant number U77HP21499.