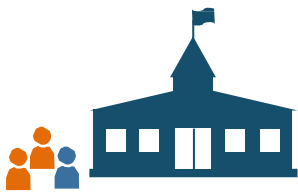


730
Participants

Enhancing access to quality healthcare, particularly primary and preventive care, by improving the supply and distribution of healthcare professionals through community and academic educational partnerships.

Pipeline Programs expose students to health careers and develop intent to pursue post-secondary education in primary healthcare professions.



463
Grades 7-16 Health
Careers Program
Participants

89
Job Shadow
Experiences

Pipeline Programs - Job Shadow Experiences -
Clinical Training

510 Rural backgrounds
205 Disadvantaged backgrounds
100 Underrepresented minorities

Clinical Training

improves readiness, willingness, and ability of health professions trainees to serve in primary care, and rural and underserved community settings.

66
Rotations

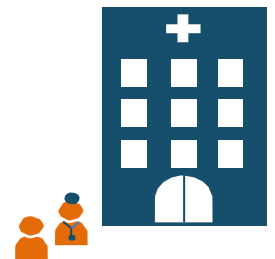
66

Health Professions Students
placed in rural and
underserved locations

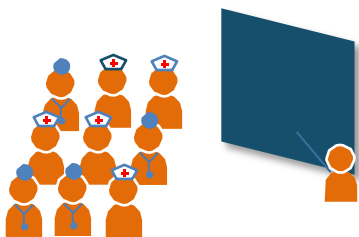
- **63** Nursing students
- **3** Medical students

Training Sites

- **11** Primary care setting
- **10** Located in a rural area
- **1** Located in a medically underserved community



Continuing Education Programs address key issues in health professional shortage areas by providing health professionals with access to resources that support practice, reduce professional isolation, disseminate best practices, and improve quality of healthcare for medically underserved communities and health disparities populations.



112

Continuing Education Participants
(66 employed in medically underserved communities)